



COLLESI

MAESTRI DEL PROFUMO

TAHITIAN GARDENIA

HOME FRAGRANCE REFILL - 300 ML

Description

AN INTENSE AND VIBRANT ESSENCE

OLFACTORY FAMILY: CHYPRE

A vibrant fragrance that quickly explodes into a fun blend of fruity notes, from the most exotic mandarin orange and pineapple to cherry and strawberry. The heart of the fragrance is its elegance: Jasmine, Rose and Violet sweetened by the gourmand hints of Caramel and Popcorn. The base is concentrated with an intriguing combination of Amber, Patchouli and White Musk.

AREAS FOR USE: Entrance, Living Space



WARNING

HIGHLY FLAMMABLE LIQUID AND VAPORS. KEEP AWAY FROM SOURCES OF HEAT. NO SMOKING. AVOID CONTACT WITH EYES AND SKIN. MAY CAUSE A SKIN ALLERGY OR REACTION. IN CASE OF SKIN IRRITATION OR ERUPTION: CONSULT A PHYSICIAN. HARMFUL FOR AQUATIC ORGANISMS. DO NOT REINTRODUCE INTO THE ENVIRONMENT. KEEP OUT OF REACH OF CHILDREN AND PETS. SAFELY COLLECT ANY SPILLOVER MATERIAL. AVOID CONTACT OF LIQUID WITH MATERIALS SUCH AS FABRIC, WOOD, MARBLE OR GRANITE. DO NOT USE PRODUCT FOR ANY PURPOSE OTHER THAN ITS INTENDED USE. NOT A FOOD PRODUCT.

INGREDIENTS

ALCOHOL DENAT, PARFUM (FRAGRANCE), ALPHA ISOMETHYL IONONE, AMYL CINNAMAL, BENZYL ALCOHOL, BENZYL BENZOATE, BENZYL SALICYLATE, BUTYLPHENYL METHYLPROPIONAL, CINNAMYL ALCOHOL, CITRAL, CITRONELLOL, COUMARIN, EUGENOL, FARNESOL, GERANIOL, HEXYL CINNAMAL, LIMONENE, LINALOOL.

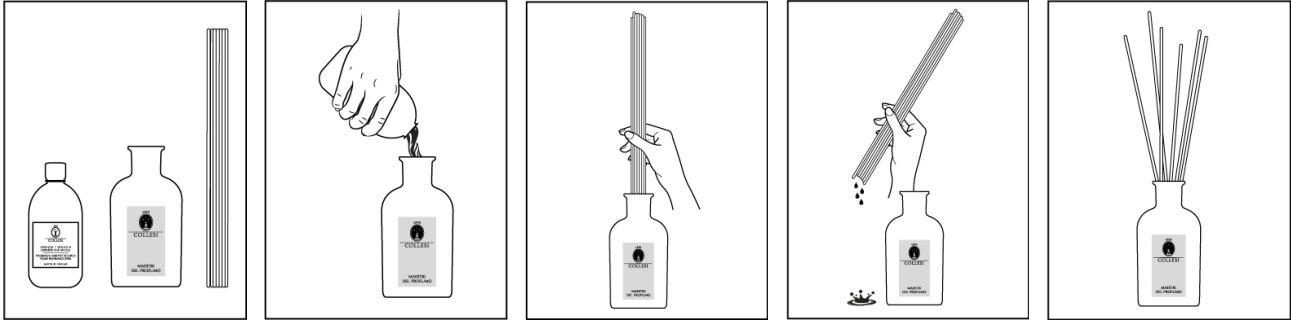




COLLESI

MAESTRI DEL PROFUMO

USER MANUAL



AMBIENT DIFFUSORS - The best spot to put the room fragrance is in the central area of the home or in a passage way. If the area is large and spacious, two diffusers with the same fragrance can also be placed at different points. We recommend using the Collesi fragrance not only in the home, but also in the office, meeting rooms, and in hotel receptions, choosing different scents based on their purpose.

HOW TO USE THE STICKS AND HOW MANY TIMES THEY SHOULD BE TURNED - It all depends on personal taste and the position of the fragrance. The first time put all the sticks in the bottle for 30 to 60 minutes and then turn them. After that, we suggest turning the sticks once or twice a week or whenever you want to be more aware of the fragrance. Rotating the sticks increases the diffusion of the scent in the air, but also its consumption. It is important that all the sticks are put into the bottle: the number of sticks is calculated to make the evaporation constant and homogeneous, and absorbed only by capillary action. Decreasing the number of sticks also leads to the evaporation of the Ambient Fragrance from the neck of the bottle, because it is no longer occupied by the sticks.

OPTIMUM LENGTH OF TIME OF THE FRAGRANCE - 4-5 months for the 500 ml bottle - The duration of a fragrance depends on the characteristics of the environment in which it's located (e.g., space, ceiling height, openings, window coverings, etc.), heating, direct sunlight and air currents, all which can accelerate the evaporation. In order to have a product with an aspect that's always perfect, we advise you to purchase a refill of the same fragrance and to constantly add more to always keep the fragrance level above the curvature of the bottle. This precaution lengthens the life of the fragrance, which will evaporate only through the bamboo sticks and thus, will prevent evaporation that differs from the essence (less volatile) and the alcohol (more volatile).

IF THE FRAGRANCE SPILLS - We recommend drying any spills as soon as possible, particularly when it comes to polished or painted wood surfaces or porous materials, such as marble, otherwise the surface may stain. If instead the fragrance should spill on the hands or body, this shouldn't present any problems. Remember that the fragrance is flammable, so never light the sticks; they are immersed in the fragrance to diffuse it and not to be lit.

REUSING THE STICKS - The sticks can be reused for another refill of the same fragrance, but we recommend doing this no more than two times. With the purchase of a new refill, a new set of sticks is always supplied.

WHAT CAN I DO WITH THE STICKS ONCE THEY ARE DRY? - Even when the fragrance has completely evaporated and the sticks are dry, they will continue to diffuse the fragrance and can be used in drawers, armoires, laundry baskets and even in the car.